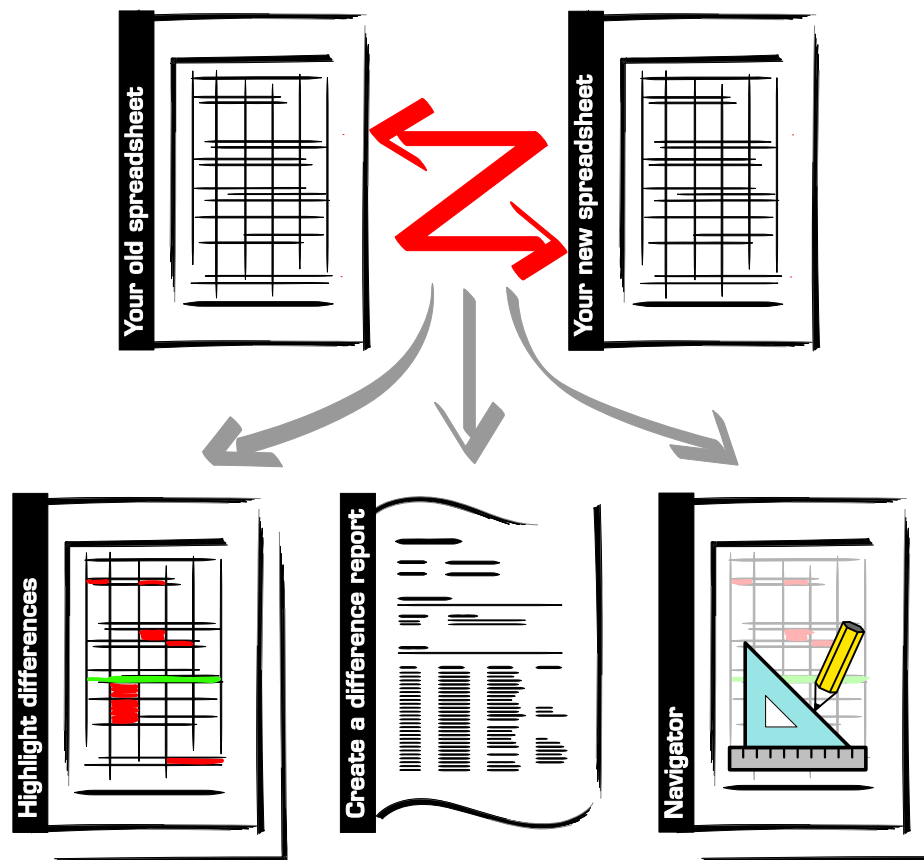




# Synkronizer 9.5

## User Manual



## Table of Contents

1	Install / Uninstall Synkronizer .....	3
1.1	Versions .....	3
1.2	Installation Instructions.....	3
1.3	Install Synkronizer manually .....	3
1.4	Uninstall Synkronizer .....	4
1.5	Uninstall Synkronizer manually .....	4
2	Synkronizer Main Menu .....	5
2.1	Files .....	5
2.1.1	Compare two worksheets.....	6
2.1.2	Compare two databases.....	7
2.1.3	Compare multiple worksheets .....	9
2.1.4	Compare ranges .....	10
2.2	Compare .....	11
2.3	Settings.....	14
2.3.1	Filters .....	14
2.3.2	Display .....	16
2.3.3	Colors.....	17
2.3.4	System.....	18
3	Action.....	20
3.1	Highlighter .....	21
3.2	Create a Difference Report .....	22
3.3	Navigator Toolbar .....	23
4	Navigator Toolbar.....	24
4.1	Toolbar .....	25
4.2	Show / Update.....	26
4.2.1	Show / hide differences .....	26
5	Synkronizer with Visual Basic for Applications .....	29
5.1	Syntax.....	29
5.2	Return Value.....	29
5.3	Arguments .....	30
5.4	Using Synkronizer in your VBA Scripts .....	33
5.5	VBA-Examples .....	33
5.5.1	Example 1.....	33
5.5.2	Example 2.....	34
5.5.3	Example 3.....	35
5.5.4	Example 4.....	36
5.5.5	Example 5 (Compare Multiple Files) .....	37

Versions of Synkronizer

## 1 Install / Uninstall Synkronizer

### 1.1 Versions

There are four different versions of Synkronizer available. Choose the one to fit your needs and budget. (The 30-day Trial version has all features enabled.)

	Light Version	Standard Version	Premium Version	Developer Version	Trial Version
Highlight differences	ü	ü	ü	ü	ü
Create a difference report		ü	ü	ü	ü
Navigator			ü	ü	ü
Synkronizer VBA				ü	ü
Price	EUR 29.--	EUR 49.--	EUR 69.--	EUR 149.--	30days

Please note that the user manual refers to the developer version only.

### 1.2 Installation Instructions

Just follow these easy steps to install Synkronizer:

Installation

1. Start the file synk95.exe and follow the install instructions. (Excel must be closed)
2. Start Excel.
3. Excel 97, 2000, XP & 2003: The menu entry "Synkronizer 9.5" appears in the menu "Tools". Excel 2007: The Synkronizer menu appears.
4. The installation is complete.

### 1.3 Install Synkronizer manually

You can also install Synkronizer manually by taking the following steps:

#### Excel 97, 2000, XP, 2003

1. Locate the directory where the installation program has copied the Synkronizer files. (Normally this should be C:\Program Files\Synkronizer\Synkronizer 9.5)
2. Copy the files "synk95.xla" and "synk95lf.xls" (the language file) to a directory of your choice.
3. Open Excel and select the menu Tools → Add-Ins. (You must have a workbook open, else this menu is not available)
4. Click on the Browse button, locate and select the file synk95.xla, then click on OK. The entry "»Synkronizer 9.5" is now listed (and checked) in the list of available add-ins. Click ok to close the dialog.
5. The menu entry "Synkronizer 9.5" appears in the menu "Tools". Now the installation has been completed successfully.

### Excel 2007

1. Locate the directory where the installation program has copied the Synkronizer files. (Normally this should be C:\Program Files\Synkronizer\Synkronizer 9.5)
2. Copy the files "synk9507.xlam" and "synk95lf.xls" (the language file) to a directory of your choice.
3. Open Excel and select the Excel item in the upper left corner.
4. Select "Excel options".
5. Click the "add-ins"-category.
6. Select "manage Excel Add-ins" and press "go".
7. Click on the Browse button, locate and select the file synk95xl07.xlam, then click on OK. Click ok to close the dialog.
8. The Synkronizer menu appears. Now the installation has been completed successfully.

### 1.4 Uninstall Synkronizer

Synkronizer is uninstalled with the following instruction: Start → Programs → Synkronizer 9.5 → Uninstall Synkronizer 9.5

### 1.5 Uninstall Synkronizer manually

You can also remove Synkronizer manually by taking the following steps:

### Excel 97, 2000, XP & 2003

1. Select the menu Tools → Add-Ins  
(You must have a workbook open, else this menu is not available)
2. Deselect the entry »Synkronizer 9.5 from the list of available add-ins.
3. Delete the Synkronizer folder.  
(Synkronizer is normally installed in the folder C:\Program Files\Synkronizer\Synkronizer 9.5)

### Excel 2007

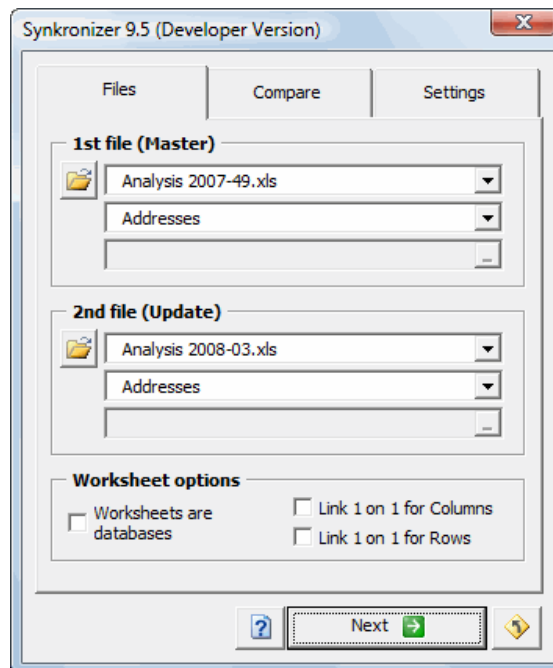
1. Open Excel and select the Excel item in the upper left corner.
2. Select "Excel options".
3. Click the "add-ins"-category.
4. Select "manage Excel Add-ins" and press "go".
5. Deselect the entry »Synkronizer 9.5 from the list of available add-ins.
6. Delete the Synkronizer folder.  
(Synkronizer is normally installed in the folder C:\Program Files\Synkronizer\Synkronizer 9.5)

## 2 Synkronizer Main Menu

Start Synkronizer

Synkronizer is started with the menu instruction Tools → Synkronizer 9.5 (Excel 97, 2000, XP & 2003) or the Synkronizer menu. A userform appears which is divided into four sections. The functions and properties of the Synkronizer main form are explained in the following chapters.

### 2.1 Files



In the section "Files" you can determine the following:

- Files to be compared
- Worksheet name(s) or ranges
- Worksheet options

Select files

#### 1<sup>st</sup> file (Master) / 2<sup>nd</sup> file (Update)

Here you choose the files to be compared. The "first file" is the "Master" file and contains the older data, the "second file" the newer data or "Update". With the "Open File" buttons you can browse your file system to find the required Excel files. By choosing the first dropdown element you can also select either the "open" or the "last used" files.

With the second dropdown you have to decide if you want to compare two worksheets, all worksheets or a specified range. In the following chapters are described how to manage these different comparison types.

### Supported File Types

If you are working with Excel XP (Version 10.0) or a later version the following file types are also supported:

File type:	File extension:
Access databases	*.mdb, *.mde
External databases	*.odc, *.udl, *.dsn
Text files	*.txt, *.csv, *.prn, *.tab
Webpages	*.htm, *.html, *.mht, *.mhtml
XML files	*.xml
Lotus 1-2-3-Files,	*.wk?
QuattroPro/DOS-Files	*.wq1
Works 2.0-Files	*.wks
dBase Files	*.dbf



#### Note:

If you wish to compare an Access or other ODBC databases, the data will be imported as snapshot. Please note that Synkronizer only compares Excel copies of the databases. This means that a maximum of 65,535 data records (Excel 2000 – Excel 2003, the limit of Excel 2007 are 1'048'576 records) may be compared and that the databases cannot be updated.

#### 2.1.1 Compare two worksheets

Here is explained how to compare two "normal" worksheets. The "database" comparison is explained in chapter 2.1.2.

1. Select the files to be compared
2. Select the worksheet names
3. In the area "Worksheet options" you can decide how the rows/columns should be linked. Synkronizer tries to match the columns and rows.

If you are sure that your worksheets contain no deleted or inserted columns/rows, you can check the fields "Link 1 on 1 for columns/rows". This overrides the linking algorithms.

4. Select "next"-button.

### 2.1.2 Compare two databases

Let us explain the most important differences between "normal" worksheets and "databases":

#### Normal worksheets

"Normal" Worksheets

are ordinary worksheets which do not contain column headings and primary keys (IDs).

#### Databases

Databases

are worksheets that contain data with a tabular structure. The data must be arranged as follows:

- The first row contains unique column names.  
Note: The checkbox "Worksheets are Databases" appears dimmed if your database doesn't start on the first row of the worksheet's "used range" or if the fieldnames can't be matched. Manually select the range of your database so that the field headers are on the first row of the range. See "Comparing Ranges".
- The database contains one column with primary keys (unique identification number, article number etc.). A primary key uniquely identifies each data records and facilitates the sorting and synchronizing of your data. The primary key does not need to be a single field (e.g. employee number). It can be constructed from up to four fields (e.g. family name, first name and city) to create a unique identifier and avoid duplicate indexes.
- Duplicate indexes are data records, which contain the same identifier. Assuming the primary key is formed from the family and first name, if you have several customers called "John Miller" in your database, Synkronizer will not know which data records should be compared. Make sure that you always operate with unique primary keys.
- Synkronizer will check if your database contains duplicate records. These are records where all fields (not just the index fields) are the same. If found these records will be marked. Duplicate records serve no purpose and should be manually deleted.

#### primary keys

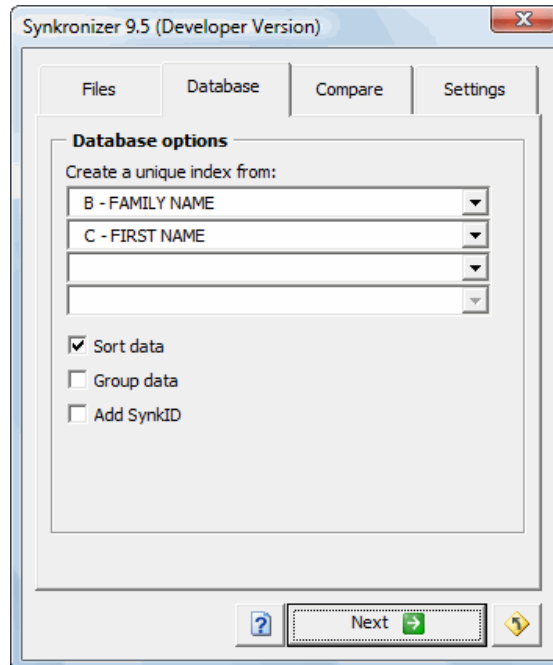
#### duplicate indexes

#### duplicate records

The comparison of "databases" is very powerful and fast. The databases may be arbitrarily sorted or altered. The inserting and deleting of columns and rows is allowed. Synkronizer will recognize all differences between the two files.

To compare two databases proceed as follows:

1. Select the files to be compared
2. Select the worksheet names
3. In the area "Worksheet options" select "Worksheets are databases". The section "Database options" is displayed.



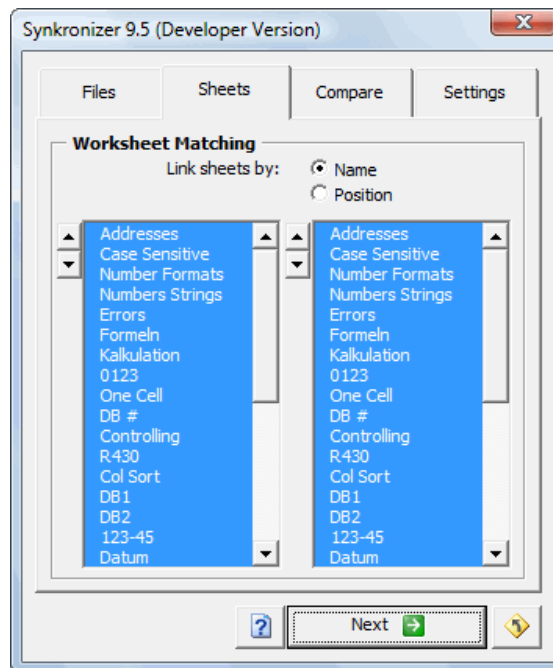
4. Select the section "Database".
5. Now you can select the key fields to be compared. You can enter up to four key fields.
6. Additionally you can choose the following options:
  - **Sort data**  
the databases are sorted according to the selected key fields.
  - **Group data**  
the databases are sorted according to the selected key fields and grouped so that the linked records are displayed at the top, followed by the duplicate indexes / records and the unmatched (added/deleted) records.
  - **Add Synk ID**  
In the last column of the databases a new column is inserted with the caption "Synkronizer IDs". This column contains the difference types. After the comparison you can use it to sort or filter your data, The following different types are written:
 

0-ID	identical cell
1-RD	deleted row (only in Master)
1-RA	added row (only in Update)
2-MD	duplicate indexes (only in Master)
2-MA	duplicate indexes (only in Update)
3-XD	duplicate records (only in Master)
3-XA	duplicate records (only in Update)
4-ZC	different cell values
5-ZF	different formats
7. Select "next"-button.

### 2.1.3 Compare multiple worksheets

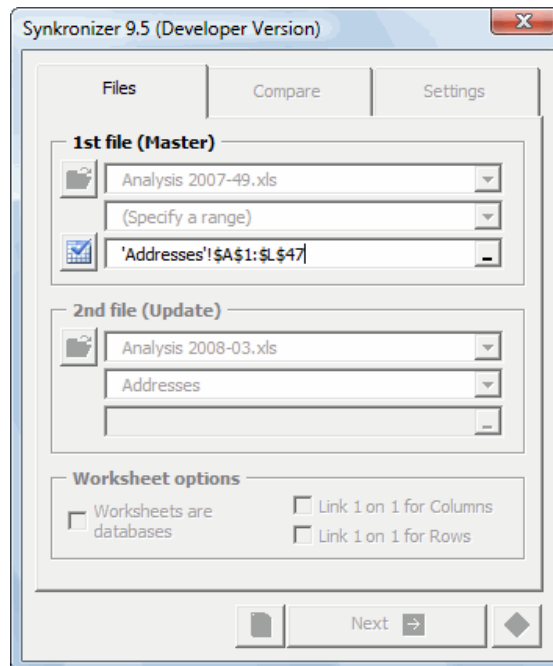
If you want to compare multiple worksheets of a file just take the following steps:

1. Select the files to be compared
2. In the 2<sup>nd</sup> dropdown select "(multiple worksheets)"; the section "Sheets" is displayed.



3. Select the section "Sheets".
4. The area "Worksheet Matching" contains two list boxes which contain the worksheet names of the "Master" and "Update"-files.  
Auto matching: click the radio buttons "Link sheet by name" or "Link sheet by position".  
The worksheets are automatically matched by their name or position within the workbook.  
Manual matching: make your selections in the listboxes. Use the spinners to move selected items up or down: only items which are on the same row in the listbox can be matched.
5. All items which are selected and on the same row will be compared.  
Note: A red line between the list boxes indicates that the current selections do not match.
6. Select "next"-button.

## 2.1.4 Compare ranges

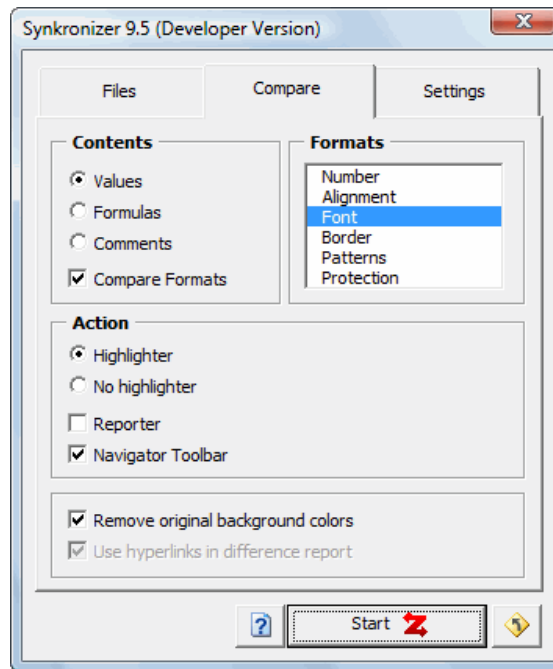


To compare two ranges proceed as follows:

1. Select the files to be compared
2. In the 2<sup>nd</sup> dropdown select "(specify a range)"; the 3<sup>rd</sup> dropdown field is activated.
3. Activate the 3<sup>rd</sup> dropdown field (which is a so-called refedit control). You can now select the desired range with the mouse.
4. Select the button with the blue checkmark to return to the form.
5. Now you decide if you want a "normal" or a "database" comparison.
6. Select "next"-button.

## 2.2 Compare

In this section you can determine which cell properties you want to compare and select the action to be taken.



### Contents

Here you can set which the content to compare. You can choose one of the following criteria:

- Values
- Formulas
- Comments

### Difference between comparing values and formulas

The two examples below illustrate the differences between values and formulas.

Comparison  
by values

The January turnover has been changed from \$10.00 to \$10.50. As a result the formula for the first quarter turnover changed from \$30.00 to \$30.50. When you are comparing values both cells will be considered different.

Comparison  
by formulas

The formula comparison on the other hand only recognizes the January difference, as the formula for the first quarter is identical.

Comparison by values:			
Old		New	
	Turnover		Turnover
January	10.00	January	10.50
February	11.00	February	11.00
March	9.00	March	9.00
<b>1st Quarter</b>	<b>30.00</b>	<b>1st Quarter</b>	<b>30.50</b>

Comparison by formulas:			
Old		New	
	Turnover		Turnover
January	10.00	January	10.50
February	11.00	February	11.00
March	9.00	March	9.00
<b>1st Quarter</b>	<b>30.00</b>	<b>1st Quarter</b>	<b>30.50</b>

Comparison by comments

### Comparison by comments

When you compare comments, only comments are compared and differences in cell values or formulas are ignored.

Formats

### Formats

First check "Compare Formats" and then select any of the formatting properties which should be compared. You can choose from the following:

- Number
- Alignment
- Font
- Border
- Patterns
- Protection

Notes



### Notes:

- Formats outside the data range are ignored.
- Formatting differences caused by applied styles are ignored. (We've chosen to first compare the actual format then, if different, we check if the cell format is equal to the cell's style's format. If that is the case we ignore the difference.
- Comparing formats takes time... for each cell many properties must be retrieved and compared. For large sheets it will noticeably affect performance.

### Action

Depending on your version Synkronizer can take the following actions after it has compared your data:

- Highlighter
- No highlighter
- Reporter
- Navigator Toolbar

You can check one or multiple actions.

In chapter 3 of the user manual the actions are described in detail.

### Remove original background colors

Here you can select whether Synkronizer removes existing background colors of cells before highlighting the differences.

### Use hyperlinks in "Difference Report"

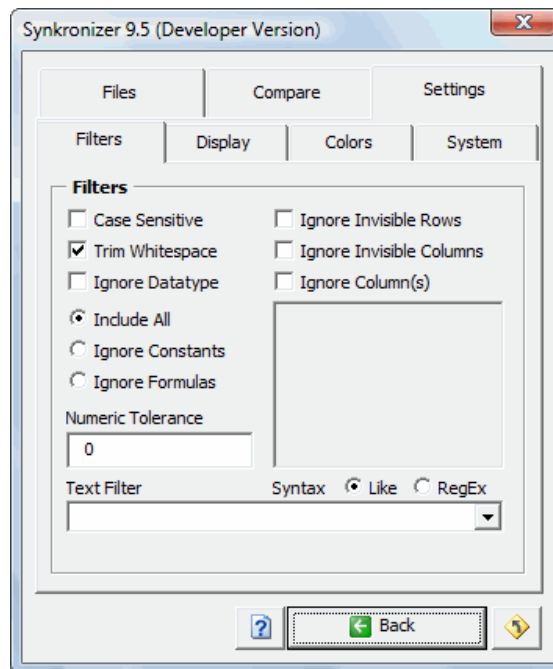
If you check this option, hyperlinks are added to the difference report to easily jump to the differences found.

## 2.3 Settings

The settings page contains 4 individual pages with settings and options. The next chapters will explain each page in detail:

### 2.3.1 Filters

In this page you can decide if Synkronizer should report all differences it finds or report a subset by ignoring differences in a certain location or of a certain type.



Case sensitive

#### Case sensitive

If you make a "normal" comparison, Synkronizer ignores differences between small and capital letters (e.g. "John Miller", "JOHN MILLER").

Trim whitespace

#### Trim whitespace

If you select the "Trim whitespace" option Synkronizer removes spaces at the beginning and end of the cell entries and comments before comparing them. Thus "John Miller" and "John Miller " (with trailing spaces) will be considered the same. You can use this to ignore the differences between empty cells and cells with only spaces.

Ignore datatype

#### Ignore Datatype

Depending on cell formatting Excel can store numeric entries as numbers, text or dates. Blank cells as string or empty. This may lead to unexpected results in file comparisons. Cells in Master and Update which look the same may be different to Excel and vice versa. Excel calculation is clever and in many formulas you will not notice the difference. Select this option to ignore these differences and 'interpret' cell content.

## Constants/Formulas

Include All / Ignore Constants / Ignore Formulas

Normally you compare both formulas and constants. Select ignore constants if you want to ignore user input but determine that a file uses the 'latest' formulas. (Synkronizer WILL report a difference if a cell contains a constant and its counterpart a formula.

## Numeric Tolerance

Numeric Tolerance

Normally numeric tolerance is 0. All differences between numeric entries are reported. In some cases you may want to ignore small differences and focus on the significant ones. Set numeric tolerance to 0.01 to ignore differences of 1 cent or smaller.

Ignore Invisible  
Rows / ColumnsIgnore Invisible Rows / Columns

When you select either of these options data in hidden columns or rows will not be compared. Note: The 'Master' file decides if a column/row is hidden or visible.

## Ignore Columns

Ignore Columns

When you select any or multiple 'ignore columns' the data in these columns will not be compared.

## Text Filter

Text Filter

With a text filter you can choose to ignore specific differences. Choose between VBA's 'like' operator or a RegEx pattern for Microsoft VBScript Regular Expressions (if installed on your system).

Following are a few examples of how to use a TextFilter:

1. In a project file the cells with 'Done' should be ignored.  
Syntax: Like. TextFilter: 'Done' (or [Dd]one if you want )
2. In a project file the cells with 'Todo' or 'Done' should be ignored.  
Syntax: RegEx. TextFilter: 'Todo|Done'
3. In a database the fields with 'New York' or 'Los Angeles' should be ignored.  
Syntax: RegEx. TextFilter: 'New York|Los Angeles'

Note : Case sensitivity for textfilters depends on Ignore Case option)

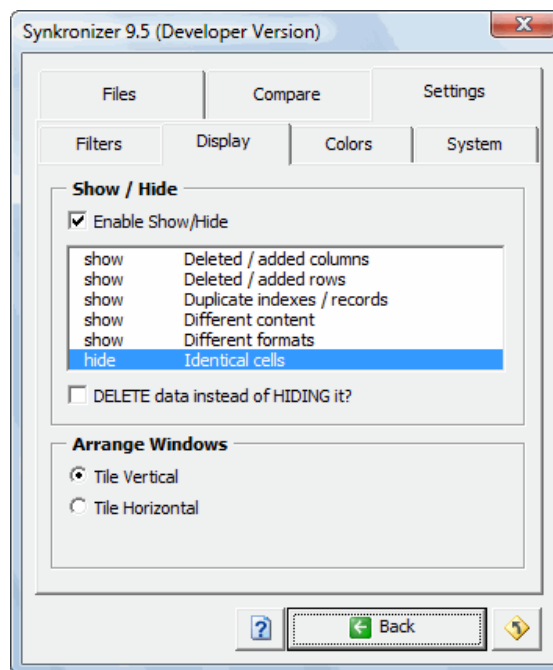
### 2.3.2 Display

In this section you can determine how Synkronizer should display the data after the comparison is complete.

Show / Hide

#### Show / Hide

When enabled Synkronizer will show or hide selected entries after comparison.



- Deleted / added columns
- Deleted / added rows
- Duplicate indexes / records
- Different cells
- Different formats
- Identical cells

If you don't want to show some data, just click on the values on the list box. The entry will be marked as "hide" or "delete". In the example shown above all cells will be displayed except the identical cells.

#### DELETE identical data instead of HIDING it?

Here you can determine whether non-marked data will be hidden or deleted. This option can only be selected if the "Highlighter" action is checked and all other actions are unchecked.

#### Note:

The delete option can only be enabled when the action 'Highlighter' is selected on the compare page and all other actions are deselected.



Show rows

### Show columns / rows

If the columns and/or rows are hidden and to be shown, please proceed as follows:

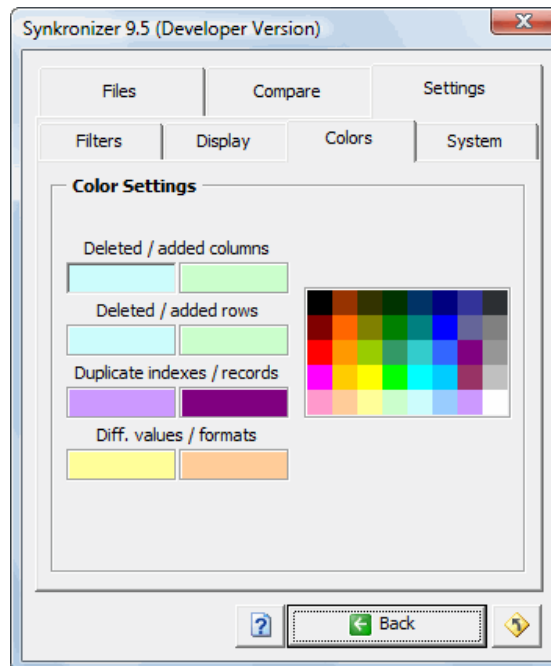
1. Select the entire worksheet (Keyboard Shortcut Ctrl-A)
2. Execute the following menu instruction: Format → Rows → Unhide

Arrange windows

### Arrange windows

Determines how windows are arranged when using Synkronizer.

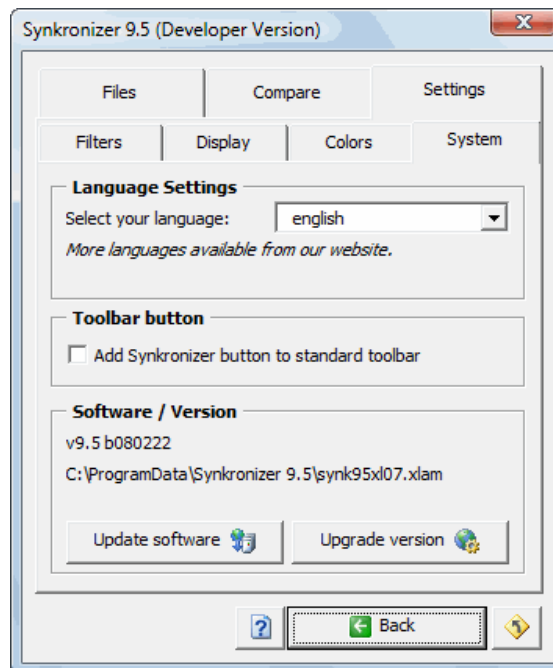
### 2.3.3 Colors



In this section you can determine the colors, with which Synkronizer highlights the differences. To change a color, just click with the mouse on the appropriate color surfaces (left) and select then the desired color (right).

### 2.3.4 System

In this section you can determine the language. Additionally you can upgrade your Synkronizer version and check, if you are working with the latest release of Synkronizer.



Language Settings

#### Language Settings

Here you can change the language used in the user-interface and report. The language file (synk95lf.xls) must be in the same folder as the add-in (synk95.xla). By default the files can be found in "C:\Program Files\Synkronizer\Synkronizer 9.5".

The list of available languages is frequently extended. The latest language files can be downloaded at <http://www.synkronizer.com>

#### Free registration for translators!

We will give you a free Synkronizer registration (Developer Version) if you help us translate Synkronizer material into your native language. Please send us a mail at [support@synkronizer.com](mailto:support@synkronizer.com) for detailed instructions.

Toolbar Button

#### Toolbar Button

If selected an additional command button is added to the standard toolbar.

Software / Version

#### Software / Version

In this area you can see the version you are working with and you can upgrade or update Synkronizer.

Update software

Update software

By clicking this button you can check if you are working with the latest release of Synkronizer. This is only possible with an online internet connection.

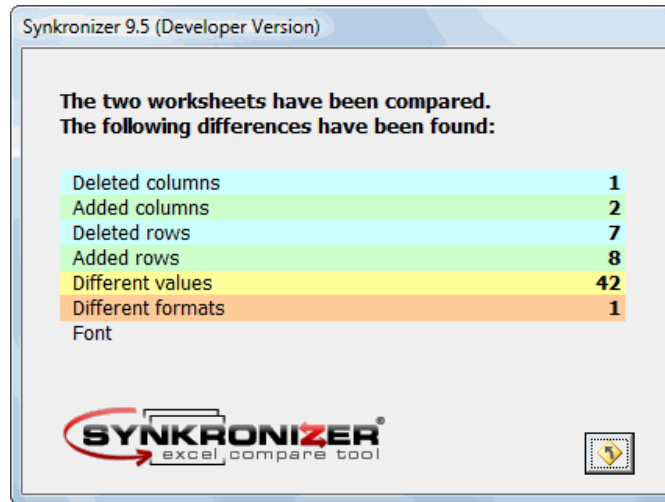
Upgrade version

Upgrade version

If you want to upgrade your version (e.g. from the "Standard" to the "Premium" version) you need to press this button.

### 3 Action

When the "Start" button is pressed the comparison algorithms will analyse your worksheets. After a few seconds you'll see a screen summarizing the results of your comparison.



This summary always appears, regardless of the selected 'Actions'. (No Summary is shown when Synkronizer was started thru VBA code.)

Highlight Differences

### 3.1 Highlighter

If you choose this action, Synkronizer just highlights the differences in the underlying worksheets:

	A	B	C	D	E	F	G	H
44	1938	6'751	6'840	-89	6'364	6'850	-10	397
45	1939	6'295	9'141	-2'846	5'792	9'154	-13	516
46	1940	6'548	9'468	-2'920	5'998	9'482	-14	564
47	1941	8'712	13'653	-4'941	8'024	13'618	35	653
48	1942	14'634	35'137	-20'505	13'738	35'071	66	830
49	1943	24'001	78'555	-54'554	22'871	78'466	89	1'041
50	1944	43'747	91'304	-47'557	42'455	91'190	114	1'178
51	1945	45'159	92'712	-47'553	43'849	92'569	143	1'167
52	1946	39'296	55'232	-15'936	38'057	55'022	210	1'028
53	1947	38'514	34'496	4'018	37'055	34'193	303	1'157
54	1948	41'560	29'764	11'796	39'944	29'396	368	1'248
55	1949	39'415	38'835	580	37'724	38'408	427	1'263
56	1950	39'443	42'562	-3'119	37'336	42'038	524	1'583
57	1951	51'616	45'514	6'102	48'496	44'237	1'277	1'843
58	1952	66'167	67'686	-1'519	62'573	65'956	1'730	1'864
59	1953	69'608	76'101	-6'493	65'511	73'771	2'330	1'766
60	1954	69'701	70'855	-1'154	65'112	67'943	2'912	1'677
61	1955	65'451	68'444	-2'993	60'370	64'461	3'983	1'098
62	1956	74'587	70'640	3'947	68'162	65'668	4'972	1'452
63	1957	79'990	76'578	3'412	73'201	70'562	6'016	773
64	1958	79'636	82'405	-2'769	71'587	74'902	7'503	546
65	1959	79'249	92'098	-12'849	70'953	83'102	8'996	-700
66	1960	92'492	92'191	301	81'851	81'341	10'850	-209
67	1961	94'388	97'723	-3'335	82'279	86'046	11'677	431
68	1962	99'676	106'821	-7'146	87'405	93'286	13'535	-1'265
69	1963	106'560	111'316	-4'756	92'385	96'352	14'964	-789
70	1964	112'613	118'528	-5'915	96'248	102'794	15'734	632
71	1965	116'817	118'228	-1'411	100'094	101'699	16'529	194
72	1966	130'835	134'532	-3'698	111'749	114'817	19'715	-630
73	1967	148'822	157'464	-8'643	124'420	137'040	20'424	3'978
74	1968	152'973	178'134	-25'161	128'056	155'798	22'336	2'581
75	1969	186'882	183'640	3'242	157'928	158'436	25'204	3'749

Differences are highlighted with the following (default) colors:

- light blue for deleted columns and rows
- green for added and columns and rows
- yellow for different cell entries
- orange for different formats
- lavender for duplicate indexes (only in database mode)
- claret for duplicate records (only in database mode)

At one glance Synkronizer clearly displays all differences and you can decide with which version of the worksheet you wish to proceed.

The colors listed above are the default values, you can specify your own color settings as described earlier.

#### Versions:

The action "Highlight Differences" can be used with all versions of Synkronizer.



Versions

Create a  
Difference Report

### 3.2 Create a Difference Report

If desired, you can display the result of the comparison in a reader friendly difference report. On this report you not only see the rows or columns deleted and/or added, but also each individual cell with different values. The difference report displays the values entered in worksheet 1 and worksheet 2. This report is a great help in tracing differences and updating your Excel files.

Data1.xls		Data2.xls	
H:\Data1.xls 13.10.2006 20:36:49		H:\Data2.xls 13.10.2006 20:36:58	
<b>synchronized worksheets</b>		these worksheets were compared	
▼ Controlling	▼ Controlling		
<b>worksheets: controlling / controlling (10)</b>		▲	
<b>deleted / added rows (1/0)</b>		these rows were found in only one of the worksheets	
<u>row 47</u>			
<b>different values (9)</b>		these cells have different values	
<u>F17</u>	691	<u>F17</u>	
<u>D48</u>	-20'505	<u>D47</u>	-20'503
<u>G50</u>	114	<u>G49</u>	115
<u>D51</u>	-47'553	<u>D50</u>	-47'556
<u>E53</u>	37'055	<u>E52</u>	37'056
<u>C58</u>	67'680	<u>C57</u>	67'686
<u>H58</u>	1'860	<u>H57</u>	1'864
<u>C61</u>	68'445	<u>C60</u>	68'444
<u>E61</u>	60'370	<u>E60</u>	60'372



Versions:

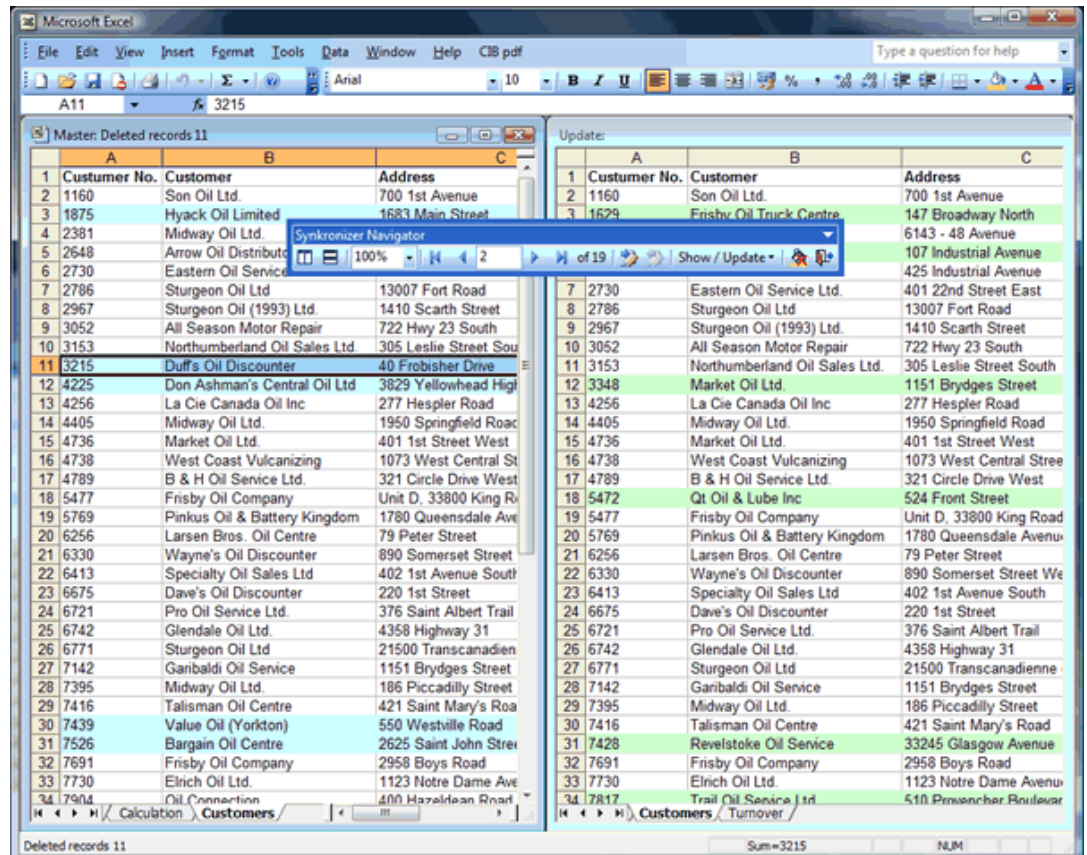
The action "Create a Difference Report" can be used with the following versions of Synkronizer:

- Standard Version
- Premium Version
- Developer Version

## Navigator Toolbar

## 3.3 Navigator Toolbar

The third function of Synkronizer is the "Navigator" toolbar: After the comparison process the worksheets are displayed vertically or horizontally and a user friendly toolbar is displayed, with which you can easily navigate through the differences.



Detailed information is described in chapter 4 Navigator.



Versions

Versions:

The "Navigator" can be used with the following versions of Synkronizer:

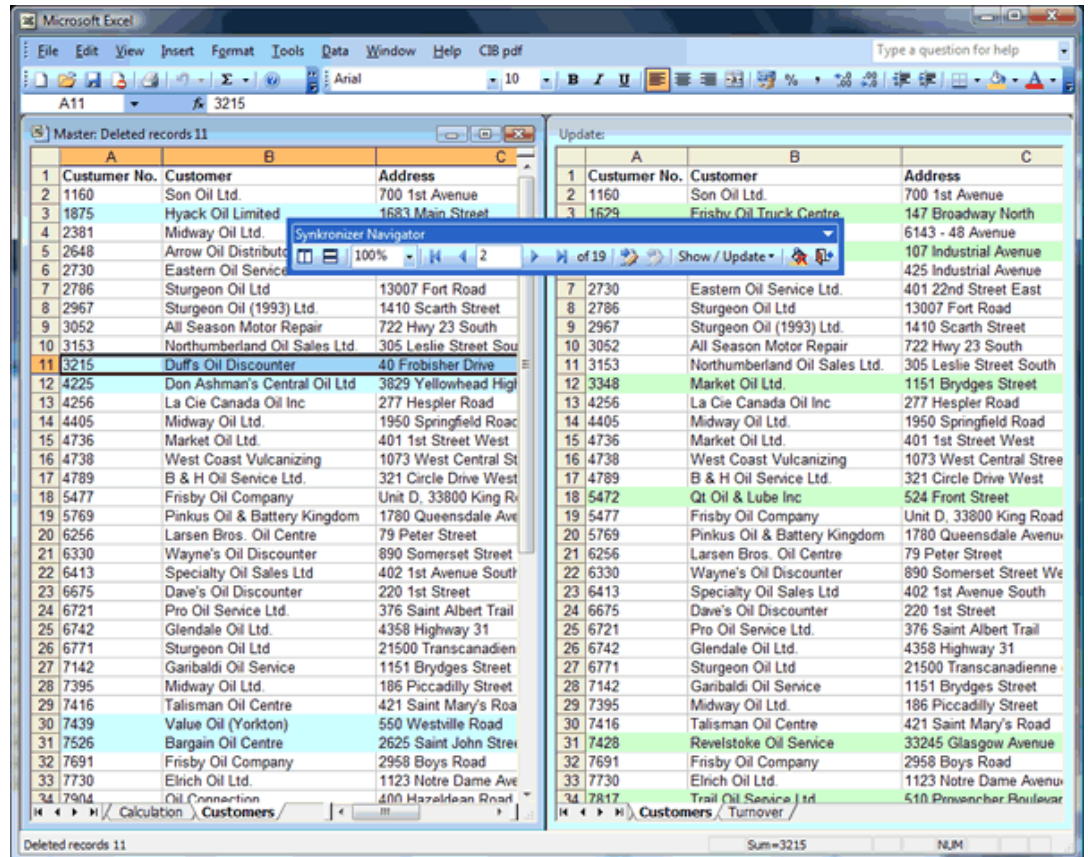
- Premium Version
- Developer Version

## 4 Navigator Toolbar

Certainly the most comfortable function of Synkronizer is the "Navigator" toolbar. After the comparison process the worksheets are displayed vertically or horizontally and a user friendly toolbar is displayed, with which you can easily navigate through the differences. Synkronizer ensures that both tables are displayed on your screen in order for you to directly compare all differences. At this point you can decide with which version you wish to continue. With mouse-clicks you can transfer values from table 1 to table 2 or vice versa. This is the quickest way to eliminate all differences and within a short period of time you will have your Excel worksheet perfectly updated.

Navigator worksheets view

After the comparison process the worksheets are tiled vertically and a user friendly toolbar appears:



Navigator toolbar

#### 4.1 Toolbar

The Navigator toolbar is as follows:



Description symbols

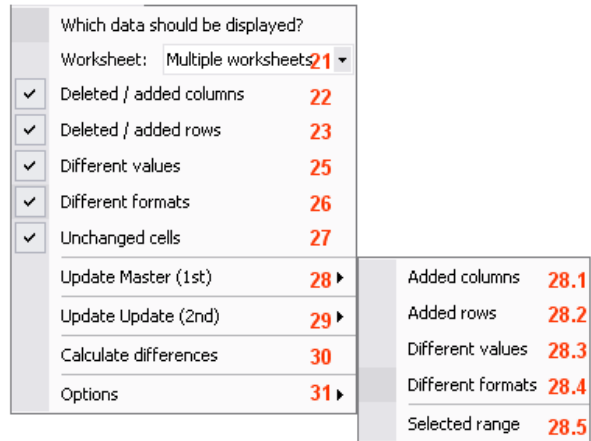
The Navigator toolbar contains the following functions:

- 1 - 2 Tile worksheets  
By using these buttons you can tile the worksheets vertically (1) or horizontally (2).
- 3 Zoom  
With this command you can zoom the worksheets.
- 4 - 8 Navigation command  
With these commands you can navigate through each difference (commands 4, 5, 7, 8) or jump directly to a particular difference (6).
- 9 Total differences  
This describes the total number of differences found between the two files.
- 10 Update "Update"  
With this command the differences are transferred from the "Master"-file (left) to the "Update" file (right). This overwrites the change with the original data.  
  
Note:  
only the highlighted difference is updated.
- 11 Update "Master"  
With this command the differences are transferred from the "Update"-file (right) to the "Master" file (left). This overwrites the original data with the updated data.  
  
Note:  
only the highlighted difference is updated.
- 12 Show / Update  
If you click on this switching surface a menu appears with which you can show/hide the data and update them.
- 13 Remove background color  
By using this command the background color of the differences will be deleted. All other background colors remain unchanged.
- 14 Close toolbar  
With this command the toolbar will be closed.

Show / Update

## 4.2 Show / Update

With this menu you can show or hide differences. The show menu contains the following functions:



Show / hide differences

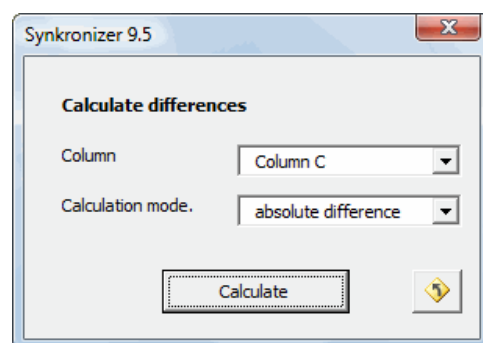
### 4.2.1 Show / hide differences

With the menu commands 1 to 7 you can show or hide the desired differences dynamically. Depending on whether the menu commands have a checkmark on the left, differences are shown or hidden. With a checkmark differences, are shown, without one they are hidden.

The following is an explanation of the different menu commands:

- 21 **Worksheet**  
If multiple worksheets are compared this item will be displayed. You can display only the differences within the selected worksheet. If you are working with only one worksheet this menu item is hidden.
- 22 **Deleted / added columns**  
If this menu option is selected, deleted (only in "Master" file) and added (only in "Update" file) columns are shown.
- 23 **Deleted / added rows**  
With this option, deleted and/or added rows are shown.
- 24 **Duplicate indexes / records (database mode only)**  
Duplicate indexes and records may occur with a database comparison. If this menu option is selected those rows are shown.
- 25 **Different values**  
With this selection, rows with different cell values (or formulas or comments) are shown.
- 26 **Different formats**  
If your worksheets contain different formats you can show or hide the different formats.

- 27 Identical cells  
Identical cells contain the same data in both files. These cells can be shown or not if you select this menu.
- 28 Update Master  
In this menu you can update the "Master" file (table left hand side) by using the following functions:
- 28.1 Added columns  
The added columns (of the file "Update") can be added to the "Master"-file. The columns will be transferred from the right to the left worksheet.
- 28.2 Added rows  
The added rows (of the file "Update") can be added to the "Master"-file. The rows will be transferred from the right to the left worksheet.
- 28.3 Different values  
The cells, which contain different values, can be transferred to the "Master"-file. The differences can be transferred directly or by manual confirmation.
- 28.4 Different formats  
The different format can be transferred from the "Update" to the "Master" file.
- 28.5 Selected range  
When only specific differences should be updated. Select a range and press this button. The differences in the selected range will be updated.
- 29 Update "Update"  
Within this menu you can update the "Update"-file. The menu functions are identical with the menu "Update Master" with the difference that the data are transferred from the "Master"-file to the "Update"-file (or from left to right).
- 30 Calculate differences  
If some columns of the worksheets contain numbers you can calculate the differences of these columns. To calculate the differences just click on this menu item, the following message box appears:



Select the desired column to be calculated and the calculation mode. Then click on the "Calculate" button. The differences are written into last column of the worksheets.

## 31 Options

### move to next difference after update

If this menu option is selected the cursor will automatically jump to the next difference after you press Update Master(1<sup>st</sup>) or Update Update (2<sup>nd</sup>).

### update empty cells

If this menu option is selected all differences will be updated. Deselect this option to prevent cell contents being overwritten with blank (empty) content from the other file.

### Example:

You want to update your product list. The update contains newer information, but not all fields are complete. To prevent mishaps you don't want to overwrite existing information with blank cells from the incomplete update file.

## 5 Synkronizer with Visual Basic for Applications

Synkronizer can also be controlled using Visual Basic for Applications (VBA). This has the advantage that recurring, standardized or complex comparison processes can be automated.



Versions

Versions:

Synkronizer VBA can be used with the following version of Synkronizer:

- Developer Version

### 5.1 Syntax

Syntax

The syntax of the Synkronizer functions is as follows:

```
Synkronizer(sFileOld As String,
            sFileNew As String,
            vSheetOld As Variant,
            vSheetNew As Variant,
            Optional sPasswordOld As String,
            Optional sPasswordNew As String,
            Optional sRangeOld As String,
            Optional sRangeNew As String,
            Optional sCompareType As String,
            Optional sHide As String,
            Optional sFormats As String,
            Optional sKeyFields As String,
            Optional sDBOptions As String,
            Optional sLinklon1 As String,
            Optional sAction As String,
            Optional sReportFile As String,
            Optional bHyperlinks As Boolean,
            Optional bDeleteBGColor As Boolean,
            Optional sFilters As String,
            Optional sIgnoreCols As String,
            Optional dTolerance As String,
            Optional sTextfilter As String) As Variant
```

### 5.2 Return Value

Return Value

The return value of the Synkronizer function is presented as follows :

"Err"	Synkronizer could not interpret one or more of the arguments or errors during processing.
Array	Synkronizer detected differences and returns the differences in a two dimensional array which is arranged as follows:

- Element(1, 1): Caption "Total differences"
- Element(1, 2): Number of total differences
- Element(2, 1): Caption "Deleted worksheets"
- Element(2, 2): Number of deleted worksheets
- Element(3, 1): Caption "Added worksheets"
- Element(3, 2): Number of added worksheets
  
- Element(4, 1): Caption "Deleted columns"
- Element(4, 2): Number of deleted columns
- Element(5, 1): Caption "Added columns"
- Element(5, 2): Number of added columns
- Element(6, 1): Caption "Duplicate indexes"
- Element(6, 2): Number of duplicate indexes
- Element(7, 1): Caption " Duplicate records "
- Element(7, 2): Number of duplicate records
- Element(8, 1): Caption "Deleted rows"
- Element(8, 2): Number of deleted rows
- Element(9, 1): Caption "Added rows"
- Element(9, 2): Number of added rows
- Element(10, 1): Caption "Different Cell Entries"
- Element(10, 2): Number of different cell entries
- Element(11, 1): Caption "Different Formats"
- Element(11, 2): Number of different formats
- Element(12, 1): Caption "Used filters:"
- Element(12, 2): Used filters

### 5.3 Arguments

#### Arguments

The function contains the following arguments.

- sFileOld** File (incl. Path) of the 1<sup>st</sup> file (Master).  
You can use Excel-, text- and odc-files. Access databases must be entered in an odc file.
- sFileNew** File (incl. Path) of the 2<sup>nd</sup> file (Update).
- vSheetOld** Worksheet name or number of the 1<sup>st</sup> file. You can enter the following values:
  - 1 the first worksheet of the 1<sup>st</sup> file will be compared
  - 3 the third worksheet of the 1<sup>st</sup> file will be compared
  - "sheet1" the worksheet with the caption "sheet1" will be compared
  - "" all worksheets will be compared.
- vSheetNew** Worksheet name or number of the 2<sup>nd</sup> file.
- sPasswordOld** Optional. Password of the protected sheet of the 1<sup>st</sup> file.
- sPasswordNew** Optional. Password of the protected sheet of the 2<sup>nd</sup> file.
- sRangeOld** Optional. A1-Range of 1<sup>st</sup> worksheet. If this argument is empty, all cells will be compared.

aRangeNew	Optional. A1-Range of 2 <sup>nd</sup> worksheet.
sCompareType	<p>Optional. This parameter contains the comparison type. You can choose one or multiple of the following characters:</p> <ul style="list-style-type: none"> <li>v Comparison by values</li> <li>f Comparison by formulas</li> <li>c Comparison by comments</li> </ul> <p>If this parameter is empty, a comparison by values is done (see also chapter 2.2.1 Area "Contents"). E.g. you want to make "case sensitive"-value comparison, just enter "vs".</p>
sHide	<p>Optional. With this parameter you can set the data types to be hidden. You can choose one or multiple of the following options:</p> <ul style="list-style-type: none"> <li>c deleted / added columns</li> <li>r deleted / added rows</li> <li>d duplicate indexes / records</li> <li>v different values (or formulas, comments)</li> <li>f different formats</li> <li>i identical cells</li> </ul>
sFormats	<p>Optional. With this parameter you determine the formats to compared:</p> <ul style="list-style-type: none"> <li>n Number formattings</li> <li>a Alignments</li> <li>f Fonts</li> <li>b Borders</li> <li>p Patterns</li> <li>t Cell protections</li> </ul>
sKeyFields	Optional. If you want to make a database-comparison, please enter the names of the keys in this section. The keys are divided with semicolons ";" (e.g. Family name; Fist name; City). If you do not make a database-comparison, leave the field empty.
sDBOptions	<p>Optional. If you are making a database-comparison, you can also set the following options:</p> <ul style="list-style-type: none"> <li>s the data records will be sorted</li> <li>g the data records will grouped</li> <li>i a Synkronizer ID will be added at the end of the database</li> </ul>
sLink1on1	<p>Optional. If the columns or rows shall be linked 1 on 1 (the worksheets contain no added/deleted columns or rows), you can set these options:</p> <ul style="list-style-type: none"> <li>c the columns are linked 1 on 1</li> <li>r the rows are linked 1 on 1</li> </ul>

sAction	<p>Optional. This argument contains the action function. You can enter the following arguments:</p> <ul style="list-style-type: none"> <li>h the differences are highlighted</li> <li>r a difference report is created</li> <li>n the navigator is started</li> </ul> <p>The values can be combined. If the differences should be highlighted and the Navigator started, you need to enter "hr". If this argument is empty, the worksheets are just compared without any action.</p>				
sReportFile	<p>Optional. If you want to create a difference report, just enter the filename (incl. Path) for the report to be created (e.g. C:\Documents\Report.xls).</p>				
bHyperlinks	<p>Optional. If true then difference report will contain hyperlinks.</p>				
bDeleteBGColor	<p>Optional. If true then existing background colors will be removed before the differences are highlighted.</p>				
sFilters	<p>Optional. Combination(s) of following filters:</p> <ul style="list-style-type: none"> <li>s (case) sensitive comparison</li> <li>t trim whitespace</li> <li>d ignore datatype</li> <li>c ignore hidden columns</li> <li>r ignore hidden rows</li> <li>k ignore constants</li> <li>f ignore formulas</li> </ul> <p>options can be combined in random order. (except ignore Constants /Formulas).</p>				
sIgnoreCols	<p>Optional. Ignore specified columns. A semicolon (;) delimited string. Use column numbers (relative to range) or Fields names in database mode.</p>				
dTolerance	<p>Optional. Ignore (numeric) difference below the tolerance.</p>				
sTextfilter	<p>Optional. Sets text filter. Must start with like: or regex: Then append a valid pattern.</p> <p>Examples:</p> <table border="0" style="margin-left: 20px;"> <tr> <td>Like</td> <td>like:done</td> </tr> <tr> <td>RegEx</td> <td>regex:yes no</td> </tr> </table>	Like	like:done	RegEx	regex:yes no
Like	like:done				
RegEx	regex:yes no				

## 5.4 Using Synkronizer in your VBA Scripts

To execute Synkronizer with VBA, set a reference to Synkronizer in your scripts. To set a reference, proceed as follows:

1. open the Excel worksheet that contains the VBA script
2. open the VBA Editor (Keyboard Shortcut Alt-F11)
3. set the focus to your VBA script
4. go to the Tools menu and select References
5. find 'Synkronizer95' in the list, and put a check next to it

Now you are able to use the Synkronizer-function. You can see some examples of VBA scripts below. Please feel free to use them.

### VBA Examples

## 5.5 VBA-Examples

### 5.5.1 Example 1

This example highlights the differences between the worksheets named "Addresses" in the files FileOld and FileNew.

```
Public Sub Example_1()
    Dim vSynk As Variant
    Dim sMsg As String
    Dim i As Integer

    On Error GoTo errH

    vSynk = Synkronizer(sFileOld:="C:\Documents\FileOld.xls", _
                      sFileNew:="C:\Documents\FileNew.xls", _
                      vSheetOld:="Addresses", _
                      vSheetNew:="Addresses", _
                      sAction:="h")

    Beep
    If Not IsArray(vSynk) Then
        MsgBox vSynk, vbExclamation
    ElseIf vSynk(1, 2) = 0 Then
        MsgBox "No differences noted.", vbInformation
    Else
        sMsg = "Synkronizer found differences:" & vbNewLine & vbNewLine
        For i = 1 To UBound(vSynk)
            sMsg = sMsg & vSynk(i, 1) & ": " & vSynk(i, 2) & vbNewLine
        Next i
        MsgBox sMsg, vbInformation
    End If

    Exit Sub

errH:
    MsgBox Err.Description, vbExclamation
End Sub
```

### 5.5.2 Example 2

This example highlights the differences in all worksheets of the two files.

```
Public Sub Example_2()  
    Dim vSynk As Variant  
    Dim sMsg As String  
    Dim i As Integer  
  
    On Error GoTo errH  
  
    vSynk = Synkronizer(sFileOld:="C:\Documents\FileOld.xls", _  
                      sFileNew:="C:\Documents\FileNew.xls", _  
                      vSheetOld="", _  
                      vSheetNew="", _  
                      sHide="i", _  
                      sAction="h")  
  
    Beep  
    If Not IsArray(vSynk) Then  
        MsgBox vSynk, vbExclamation  
    ElseIf vSynk(1, 2) = 0 Then  
        MsgBox "No differences noted.", vbInformation  
    Else  
        sMsg = "Synkronizer found differences:" & vbNewLine & vbNewLine  
        For i = 1 To UBound(vSynk)  
            sMsg = sMsg & vSynk(i, 1) & ": " & vSynk(i, 2) & vbNewLine  
        Next i  
        MsgBox sMsg, vbInformation  
    End If  
  
    Exit Sub  
  
errH:  
    MsgBox Err.Description, vbExclamation  
End Sub
```

### 5.5.3 Example 3

This procedure compares the first worksheet of both Excel files and creates a difference report called "Report.xls".

```
Public Sub Example_3()  
    Dim vSynk As Variant  
    Dim sMsg As String  
    Dim i As Integer  
  
    On Error GoTo errH  
  
    vSynk = Synkronizer(sFileOld:="C:\Documents\FileOld.xls", _  
                      sFileNew:="C:\Documents\FileNew.xls", _  
                      vSheetOld:=1, _  
                      vSheetNew:=1, _  
                      sAction:="r", _  
                      sReportFile:="C:\Documents\Report.xls")  
  
    Beep  
    If Not IsArray(vSynk) Then  
        MsgBox vSynk, vbExclamation  
    ElseIf vSynk(1, 2) = 0 Then  
        MsgBox "No differences noted.", vbInformation  
    Else  
        sMsg = "Synkronizer found differences:" & vbNewLine & vbNewLine  
        For i = 1 To UBound(vSynk)  
            sMsg = sMsg & vSynk(i, 1) & ": " & vSynk(i, 2) & vbNewLine  
        Next i  
        MsgBox sMsg, vbInformation  
    End If  
  
    Exit Sub  
  
errH:  
    MsgBox Err.Description, vbExclamation  
End Sub
```

#### 5.5.4 Example 4

This example compares the databases "Addresses". The primary key is "ID". The data records will be grouped and the Synkronizer IDs are added to the databases. Finally the differences are highlighted in both files and the Navigator is started.

```
Public Sub Example_4()  
    Dim vSynk As Variant  
    Dim sMsg As String  
    Dim i As Integer  
  
    On Error GoTo errH  
  
    vSynk = Synkronizer(sFileOld:="C:\Documents\FileOld.xls", _  
                      sFileNew:="C:\Documents\FileNew.xls", _  
                      vSheetOld:="Addresses", _  
                      vSheetNew:="Addresses", _  
                      sKeyFields:="ID", _  
                      sDBOptions:="gi", _  
                      sAction:="hn")  
  
    Beep  
    If Not IsArray(vSynk) Then  
        MsgBox vSynk, vbExclamation  
    ElseIf vSynk(1, 2) = 0 Then  
        MsgBox "No differences noted.", vbInformation  
    Else  
        sMsg = "Synkronizer found differences:" & vbNewLine & vbNewLine  
        For i = 1 To UBound(vSynk)  
            sMsg = sMsg & vSynk(i, 1) & ": " & vSynk(i, 2) & vbNewLine  
        Next i  
        MsgBox sMsg, vbInformation  
    End If  
  
    Exit Sub  
  
errH:  
    MsgBox Err.Description, vbExclamation  
End Sub
```

Compare multiple files

## 5.5.5 Example 5 (Compare Multiple Files)

This procedure compares one Master-file (Master.xls) with all files within the folder "C:\Documents\New\" and produces a difference report for every comparison. The difference reports are saved in the folder "C:\Documents\Reports\".

```
Public Sub Example_5()
    Dim sFile As String
    Dim vSynk As Variant
    Dim sFileOld As String
    Dim sFileNew As String
    Dim sPathNew As String
    Dim sPathReport As String
    Dim sFileReport As String

    On Error GoTo errH

    sPathReport = "C:\Documents\Reports\"

    sFileOld = "C:\Documents\Old\Master.xls"
    sPathNew = "C:\Documents\New\"
    sPathReport = "C:\Documents\Reports\"

    sFileNew = Dir(sPathNew & "*.xls")
    Do While sFileNew <> ""
        sFileReport = "Difference Report " & sFileNew

        vSynk = Synkronizer(sFileOld:=sFileOld, _
            sFileNew:=sPathNew & sFileNew, _
            vSheetOld:=1, _
            vSheetNew:=1, _
            sAction:="r", _
            sReportFile:=sPathReport & sFileReport)

        If Not IsArray(vSynk) Then
            MsgBox vSynk, vbExclamation
        End
    End If

    Workbooks(sFileNew).Close SaveChanges:=True
    Workbooks(sFileReport).Close SaveChanges:=False
    sFileNew = Dir
Loop

    Beep
    MsgBox "Finished"

    Exit Sub

errH:
    MsgBox Err.Description, vbExclamation
End Sub
```